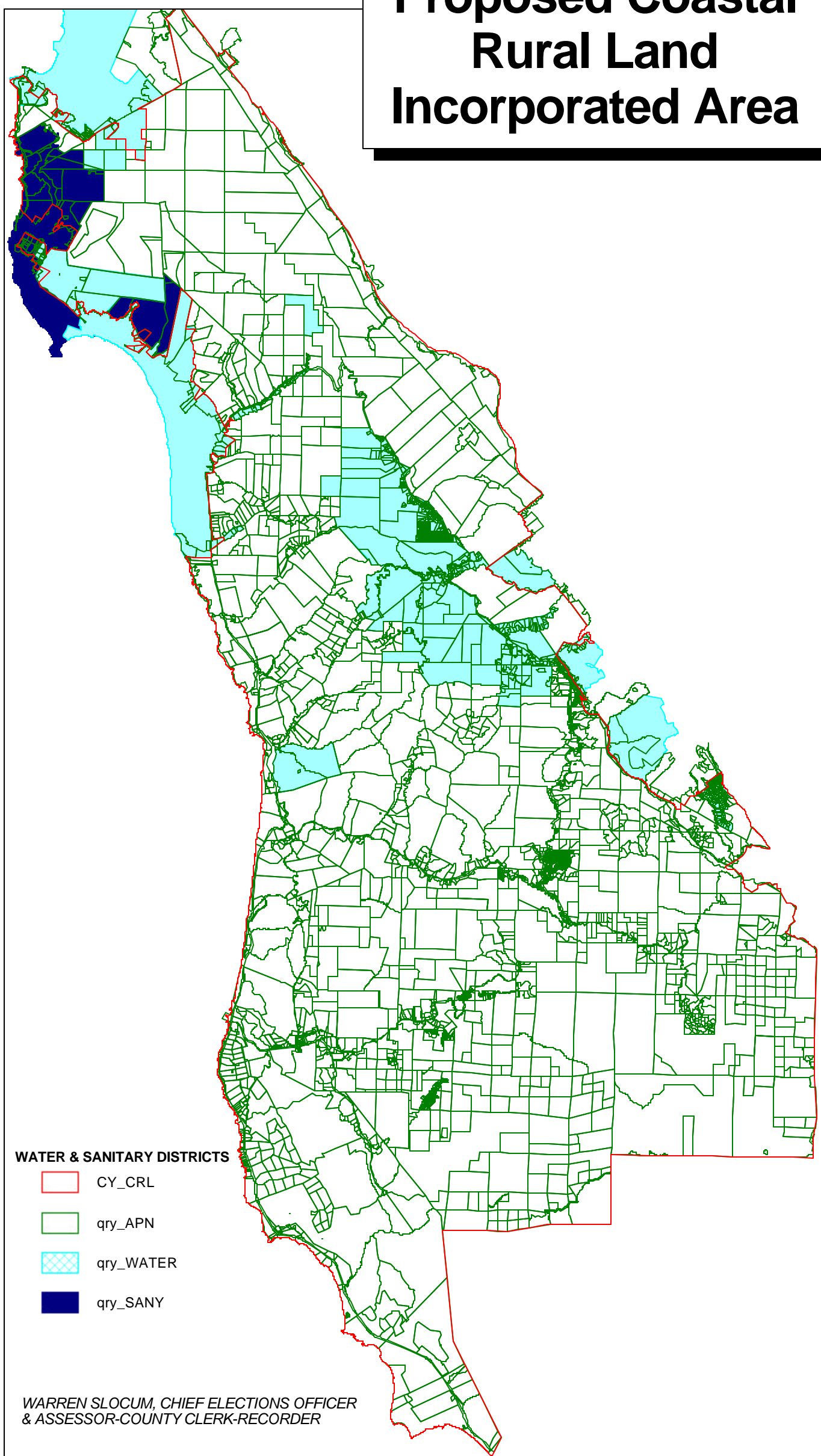



# Proposed Coastal Rural Land Incorporated Area



## WATER & SANITARY DISTRICTS

-  CY\_CRL
-  qry\_APN
-  qry\_WATER
-  qry\_SANY

WARREN SLOCUM, CHIEF ELECTIONS OFFICER  
& ASSESSOR-COUNTY CLERK-RECORDER