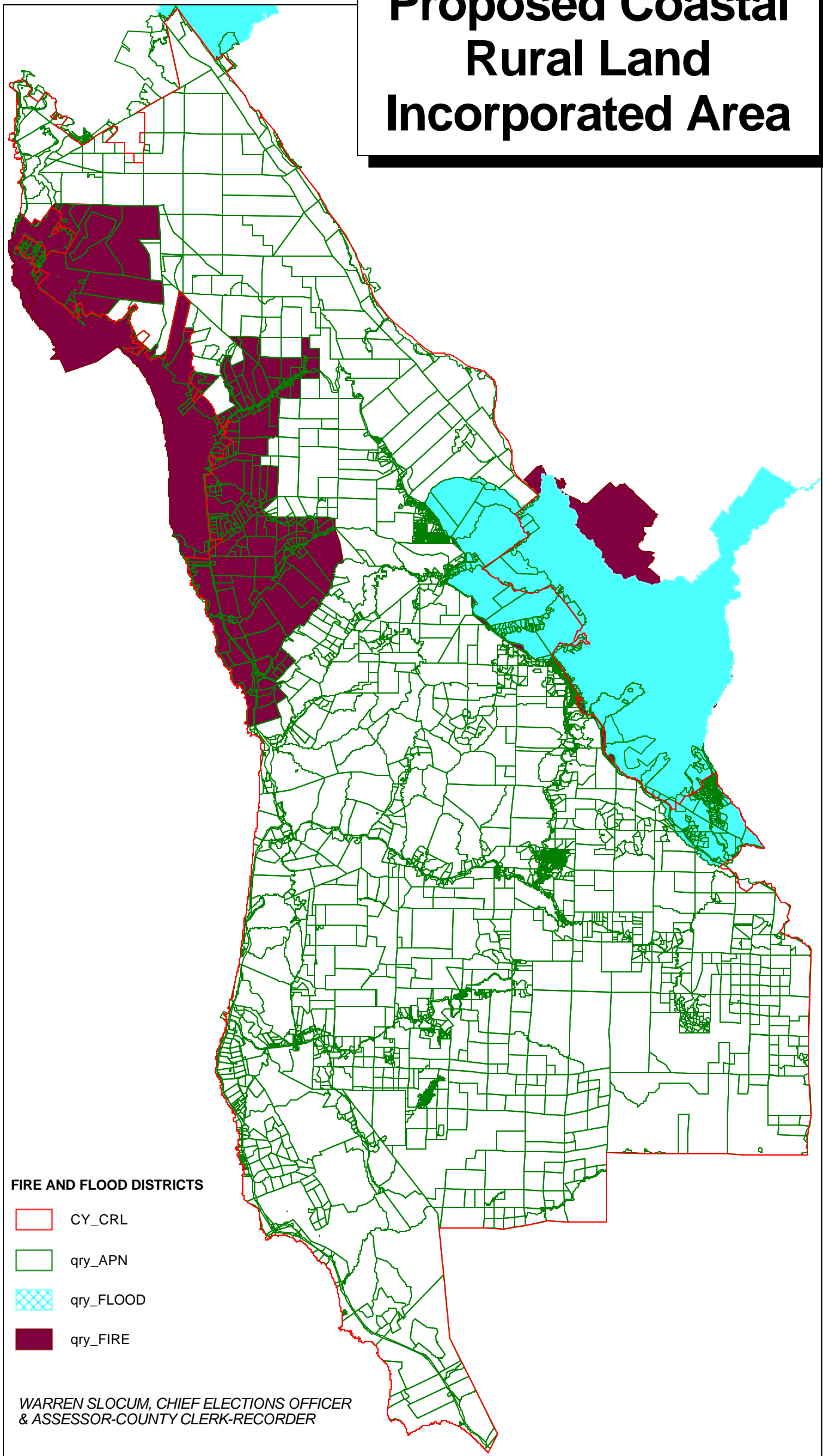


Proposed Coastal Rural Land Incorporated Area



FIRE AND FLOOD DISTRICTS

-  CY_CRL
-  qry_APN
-  qry_FLOOD
-  qry_FIRE

WARREN SLOCUM, CHIEF ELECTIONS OFFICER
& ASSESSOR-COUNTY CLERK-RECORDER