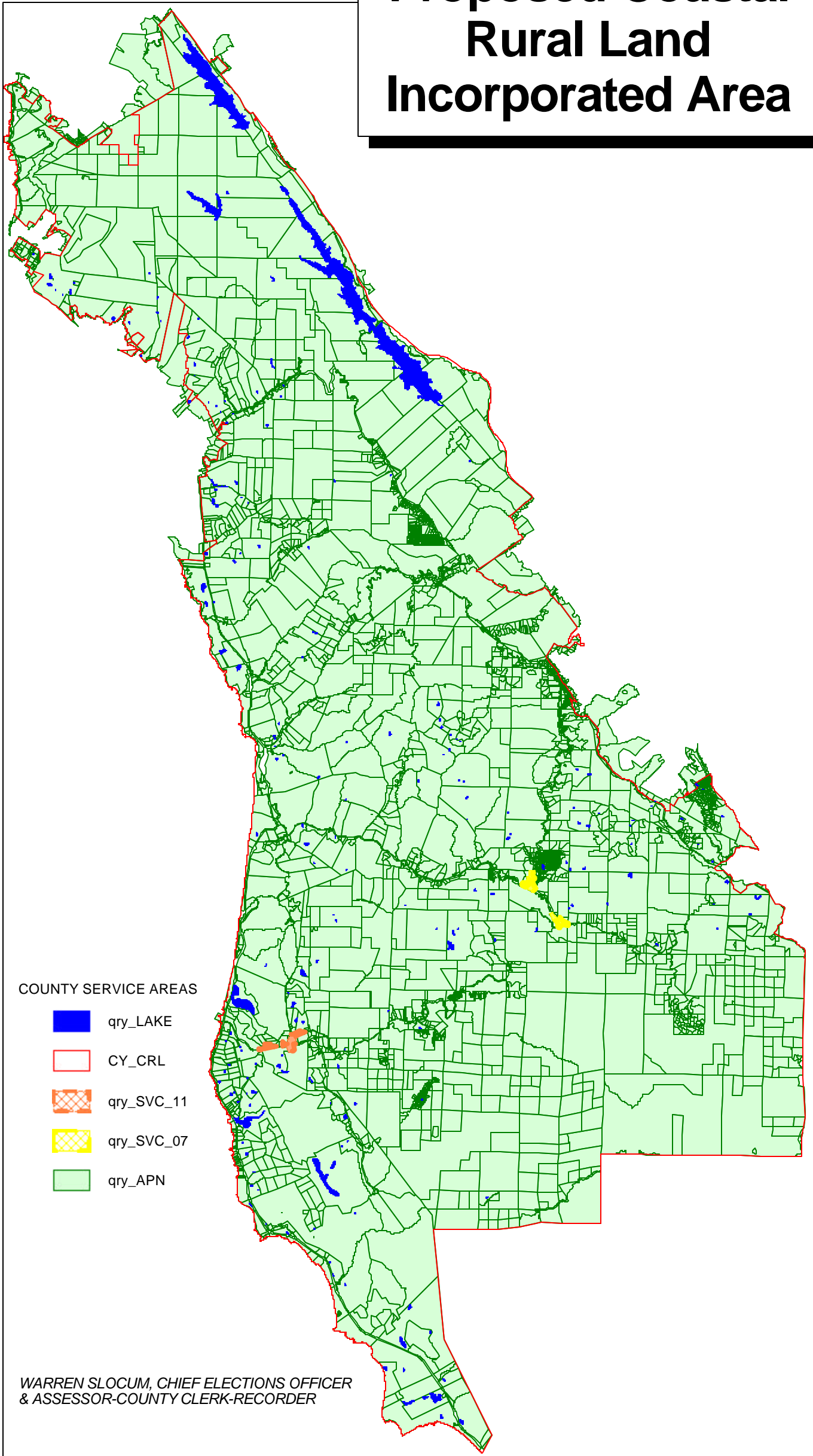


Proposed Coastal Rural Land Incorporated Area



COUNTY SERVICE AREAS

-  qry_LAKE
-  CY_CRL
-  qry_SVC_11
-  qry_SVC_07
-  qry_APN

WARREN SLOCUM, CHIEF ELECTIONS OFFICER
& ASSESSOR-COUNTY CLERK-RECORDER